

Use Basecamp to download BirdsEye Satellite Imagery.

New to the latest Garmin handheld GPS units such as Colorado, Dakota or Oregon is the ability to access worldwide aerial maps for your GPS for a moderate annual subscription; imagine travelling to a remote part of the world and instead of no map being able to download something that looks like a Google map to your GPS suddenly the world of digital mapping takes another huge step forward.



More importantly using Basecamp in this way opens the doors to some very interesting developments in the future; if you can download maps Satellite Imagery using the Internet then one can only assume you can download any other maps held in the clouds (on a remote server).

Basecamp Explained

Garmin have always support their handheld outdoor GPS units with software that allows you to view and organise your maps, waypoints, routes and tracks and send them to your Garmin device; in the past they used a software application called MapSource – Basecamp in simply an updated version of MapSource that supports new GPS features like viewing maps in 2/3D, it lets you Geotag images and importantly allowing the transfer of satellite images to a compatible Garmin device.

In the past MapSource typically came on a CD accompanying the product; Basecamp & the other requirement to download imagery the Garmin Communicator Plugin are both available as free downloads from the Garmin website

Before you can access or even purchase a BirdsEye Satellite Imagery subscription you should have Basecamp installed on your PC/Laptop; Basecamp is a free download available from the Gamin website [use this link to download either a Windows or Mac version of Basecamp.](#)

Create a My Garmin account and register your GPS

We found that we were unable to purchase imagery without creating a My Garmin account or registering the product; which we found strange at the time but when we started using the imagery we found that the imagery subscription was linked to the ID number of the GPS we were using as an Imagery subscription is limited to one GPS.

Firstly visit the Garmin website and look for the My Garmin tab or [use this link](#) then if you haven't already done so create a My Garmin account with a unique user name & password: you will then be able to go on and register your GPS device

To register your device you will need the product serial number (found in the battery compartment) your GPS, a USB cable and the Garmin Communicator Plugin installed on your PC/Laptop and then follow the on-screen instructions



Install the Garmin Communicator Plugin

Somewhere during the process you will be offered the option of installing the Garmin Communicator Plugin and another associated control application both are essential to the imagery download process in Basecamp.



[The Garmin Communicator Plugin](#) is a free Internet browser plugin that sends and retrieves data from Garmin GPS devices; once the plugin is installed, just connect your Garmin GPS device to your computer, and you're on your way.

The application is compatible with most computers and Internet browsers including; IBM-compatible PCs running Windows® XP or Vista operating systems with Internet Explorer 6+ or Firefox 1.5+ Intel-based or PowerPC G3 or later - Mac OS 10.4 or later with Firefox 2.0+ or Safari 2.0+

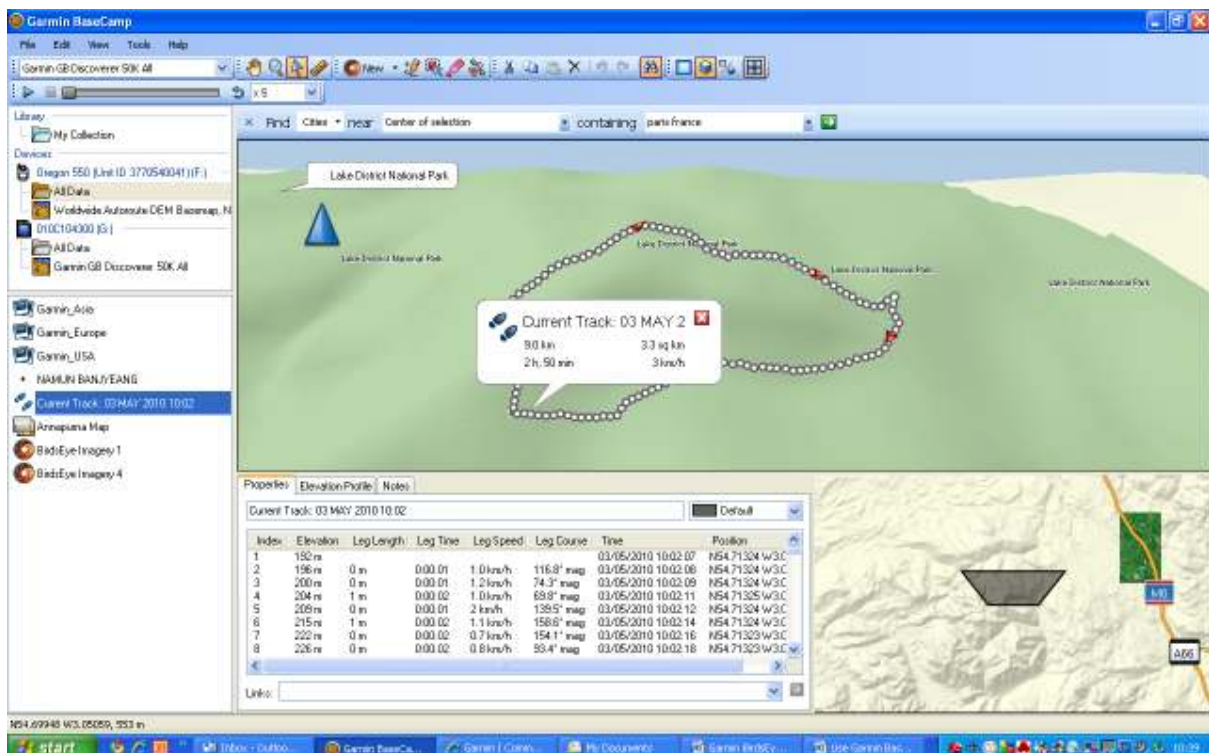


Using Basecamp

For many GPS owners using a Garmin support application like Basecamp would be all they need to send or receive data like waypoints, routes and tracks to or from their GPS. This data can be viewed and managed on whatever map is available to you (it comes with a basic world map)

Basecamp offers limited route planning dependant on what mapping you are using; it comes with a basic world map that will at least allow you to add new waypoints etc worldwide provided you set the position data to match the paper map you are using.

Once you have connect your GPS to your PC and it's recognised by Basecamp (it will display details of the device and unit ID number in Basecamp) then you will be able view All Data held on the device and details at any Maps, Custom Maps and BirdsEye Imagery held on the device



Basecamp recognises my device and displays details of Data, Maps, Custom Maps and Imagery

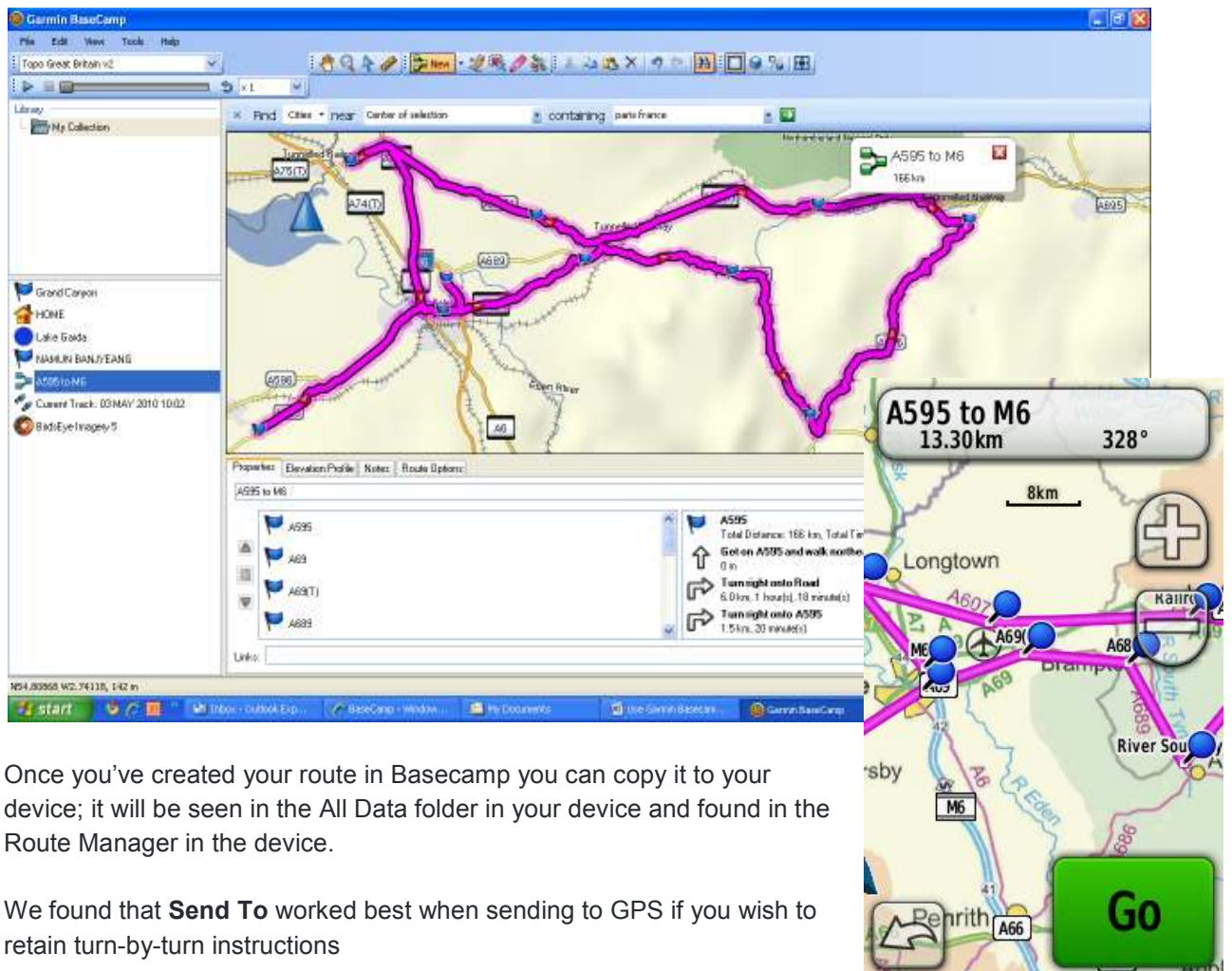
In the UK many GPS users will have Ordnance Survey based PC software like Memory-Map or Quo that they use for route planning; these types of applications offer superior route planning with more detailed maps; data files saved in say Memory-Map by default would be saved as a .mmo.file which will not open in Basecamp or MapSource the secret is to save data files as .gpx.files a universal file format that will open in most GPS friendly applications including Basecamp and MapSource

In our screen capture above you can see that our device has been recognised by Basecamp and the details are displayed on the screen; we have opened the **All Data** folder in the device and can see details of all waypoints held on the device, in addition it shows we have a Custom Map (Annapurna Map) and some BirdsEye Imagery (BirdsEye Imagery 1 & 4)

The **All Data** folder should not be confused with the **My Collection** folder in Library; this is a folder held in Basecamp on your PC. You can copy any data from your device to this folder and any imagery will be saved to this folder and then copied from the folder to your device.

In the screen capture below we have created a new route with the auto routing option enabled; you can choose to navigate both on and off road with Basecamp. If you choose to create you route on road then it will calculate the optimum route based on your selected parameters or off road using direct routes or straight lines.

Our Route created in Basecamp gives turn-by-turn instructions



Once you've created your route in Basecamp you can copy it to your device; it will be seen in the All Data folder in your device and found in the Route Manager in the device.

We found that **Send To** worked best when sending to GPS if you wish to retain turn-by-turn instructions



Download Satellite Imagery to Basecamp & GPS

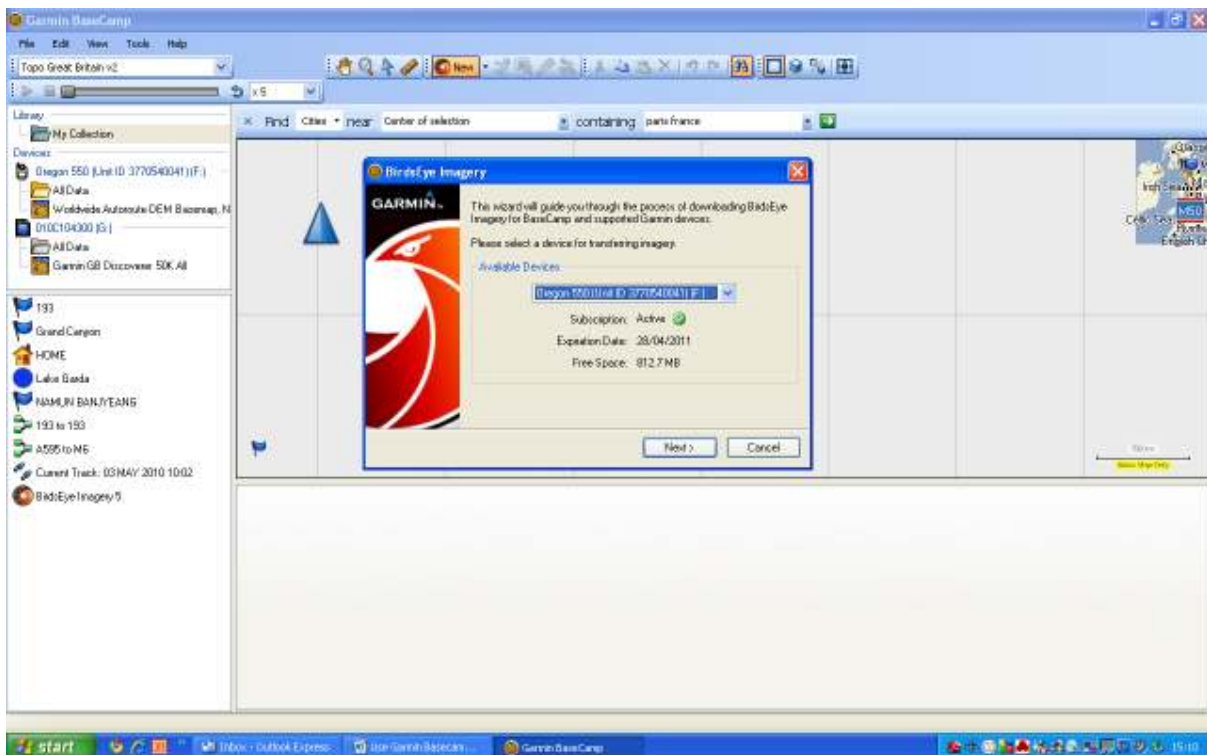
Once you have registered your GPS with Garmin and downloaded Basecamp to your PC up and running you are ready to take the next steps towards downloading Satellite Imagery

First you need to purchase a subscription from Garmin; as of April 2010 the cost of a year's subscription is £21.99 which allows you to transfer an unlimited number of satellite and aerial images to your device using Basecamp. Before you purchase your BirdsEye subscription you can import the satellite imagery to your computer to check data coverage for your chosen area as the quality of imagery varies worldwide.

Once you have made your purchase using your My Garmin account; anytime you wish to make a download your PC will check out whether there is an active subscription and inform you of the space available in the GPS for Imagery downloads (see screen grab below)

To download Imagery > New > BirdsEye Imagery you will see the BirdsEye Imagery dialog box which will automatically connect to the Internet and validate the connection > if you have an active subscription then you will be able to take the next steps towards mapping download and transfer to GPS

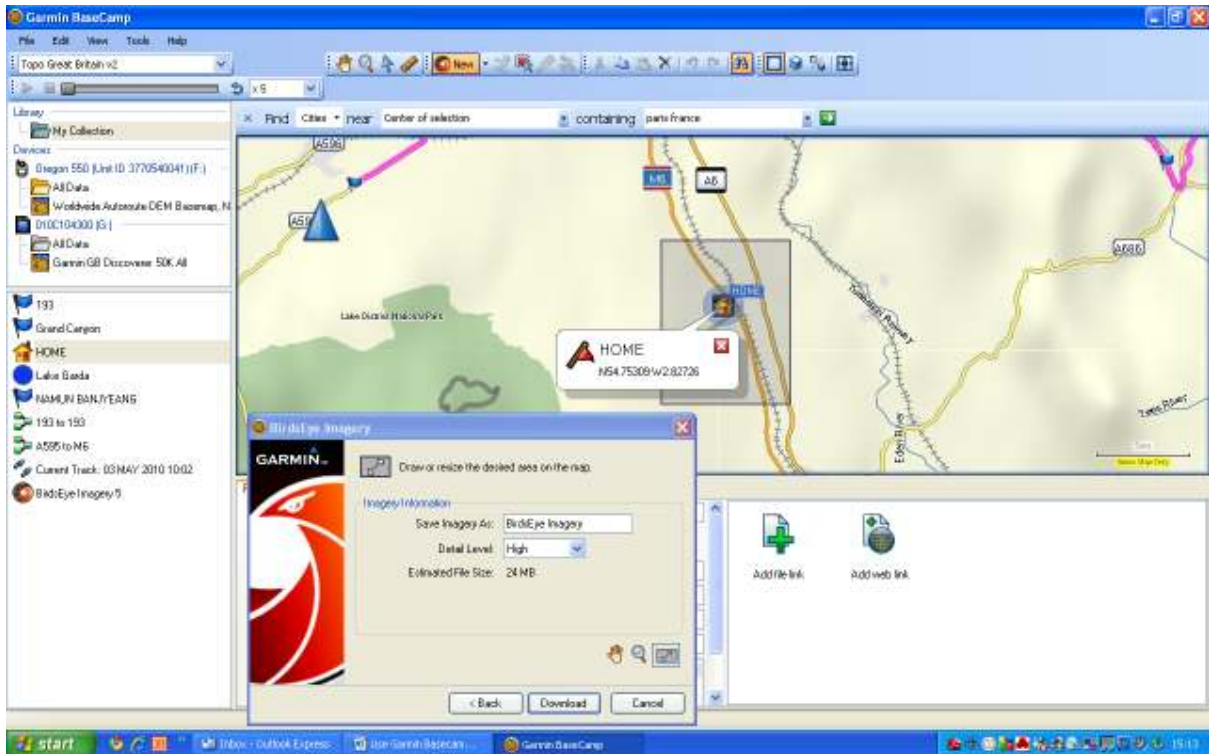
Connect you GPS to your PC go to New > BirdsEye Imagery



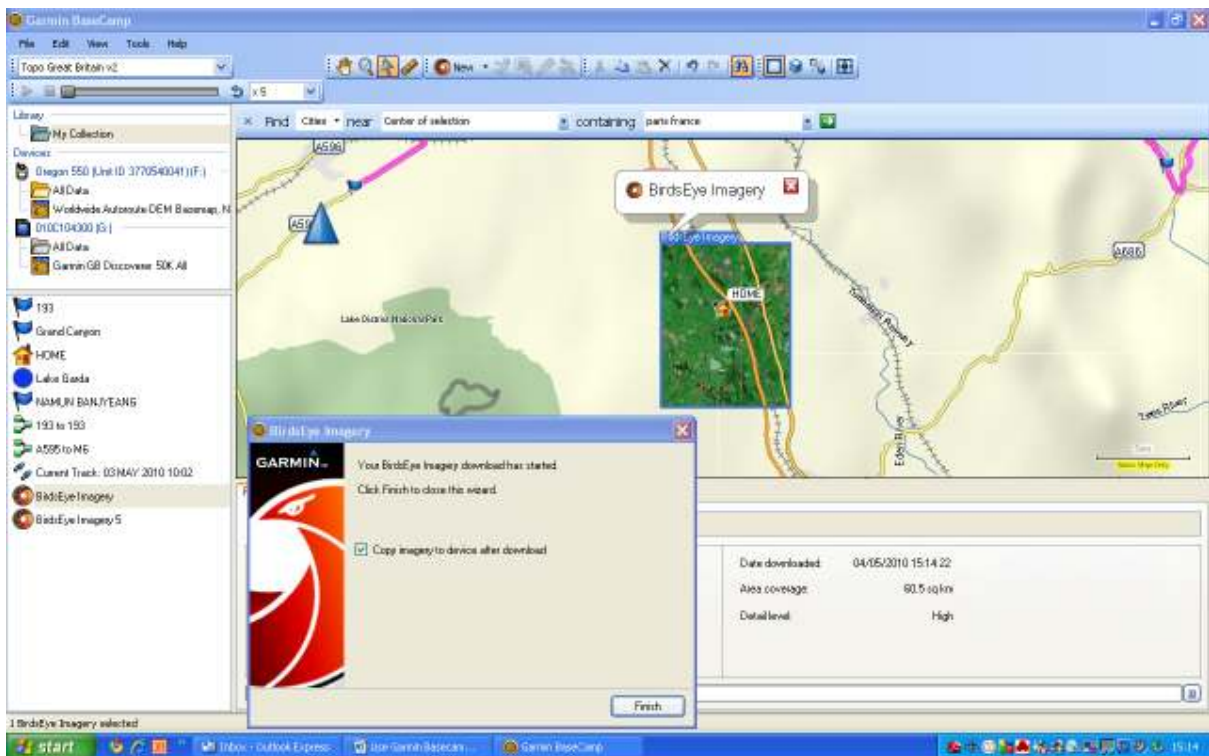
Now you are ready to select an area of imagery to transfer; we find this easiest if you have waypoint or route on the map as guidance for imagery selection

In the example below we have created a waypoint Home and then selected a small area of mapping around the waypoint using the selection tool in this case the BirdsEye Imagery dialog box has calculated the size of the download at 24MB well within the space available on the device.

Select an area of imagery from the map



Make sure you check the Copy Images to device after download

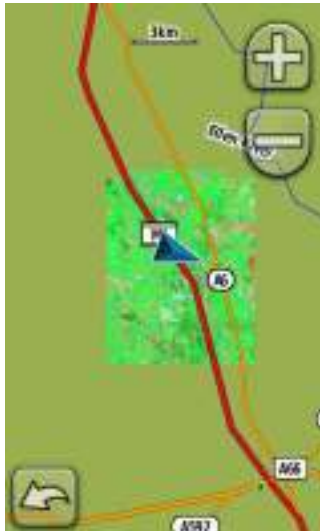


When you download imagery from the Internet be sure to ask for the imagery to be copied to the device – if you forget to do this it will be copied to you're **My Collection** folder and not to the device.

To find your downloaded Imagery go to your GPS > Tap **Main Menu > Setup > Map > Map Information Select Map** > scroll up/down to view maps available

To view the map at your location simply switch on your GPS and when you have a position fix you will be able to see your position in the centre of the imagery as seen right

The imagery will be seen over whatever basemap you have in your GPS in this case we have a standard European basemap – zoom in to view more map detail



Imagery seen overlaid on Basemap



Zoom in to see map in more detail



Imagery quality varies worldwide

If you have more than one map at cursor you can enable or disable maps > in the **Setup menu Tap > Map > Map Information Select Map** > and then **Tap** the map you wish to Enable/Disable and make your choice.



You can also Setup separate profiles for your GPS with one profile displaying OS Discoverer mapping and another profile displaying your Imagery; to do this go to **Setup > Profiles > Tap Create New Profile** > this will set the new profile as your current profile and any map selections will be saved as default in this profile

If you wish to switch between profiles then go to the **Main Menu > Profiles** and choose the profile you wish to use.



For more information this subject or about GPS Training visit our website www.gpstraining.co.uk or call us on 01768 885855